



Comment on suggestions 25

Aaron Farr

5 pages

COMMENT – SUBMISSIONS OF GEOFF ARNOTT AND MAROONDAH BUSINESS GROUP

To whom it may concern.

I am the Captain of the Wonga Park CFA and Chair Warrandyte Community Financial Services Pty Ltd (a franchisee of Bendigo Bank), but write this submission in my personal capacity, capacity as a Wonga Park resident, and capacity as a locally based lawyer within Warrandyte.

I note that there are some submissions proposing the suburb of Wonga Park be redistributed into the federal electorate of Deakin for the first time.

For the reasons below, I submit that this would run contrary to the community of interest of Wonga Park, which has a long connection to Manningham and the federal electorate of Menzies.

Wonga Park Community of Interest

Wonga Park CFA is a key community organisation located in Wonga Park, responsible for 24hr firefighting, community safety, and disaster relief.

Wonga Park is beyond the Melbourne Urban Growth boundary¹. It has a low population density, and a significant proportion is zoned as Rural Conservation Zone Schedule 5 or 4. It has a regional character. This presents unique challenges for firefighting and emergency management. Nearby Suburbs of Warrandyte, North Warrandyte, and Warrandyte South also share these characteristics².

It is for this reason that Wonga Park CFA is part of the Greater Warrandyte CFA brigades and maintains strong ties with North Warrandyte, Warrandyte, and South Warrandyte CFAs. Joint activities within these four CFA units include the annual Manningham City Council Fireball (a major CFA fundraiser), the Manningham Municipal Emergency Management Planning Committee (MEMPC), and the Manningham Municipal Fire Management Planning Committee (FMPC).

¹ Figure 1

² Figure 2

The neighbouring electorate of Deakin consists almost entirely of General and Neighbourhood residential zones, having a denser suburban makeup. It shares none of the characteristics that Wonga Park, Warrandyte, North Warrandyte, and South Warrandyte have in common. The vast majority of Deakin is not within the CFA area, a testament to its urban nature.

If shifted into Deakin, Wonga Park CFA would be isolated from other CFA units in Menzies and Manningham with similar geographic characteristics, firefighting needs, and common council and federal representation³. It would be the only CFA unit in Deakin, which is otherwise serviced entirely by Fire Rescue Victoria.

Wonga Park CFA benefits from having the same federal representation as the rest of the Greater Warrandyte CFA brigades. It also benefits from the fact that all of Manningham City Council lies within Menzies, as this helps streamline emergency planning.

One of the submissions refers to Hochkins Ridge Flora Reserve in Holloway Road, Croydon North, which is managed by Parks Victoria but within Maroondah LGA. While Hochkins Ridge is located within Wonga Park CFA's primary area and I acknowledge the fire risk and significance this presents to residents, this is minor in comparison to the risk presented by the Warrandyte State Park in Wonga Park CFA's primary area and is an exception to the usual fire risk in Wonga Park. Specifically, I refer to Jumping Creek Reserve, Market Gardens, Wittons Reserve and Mt Lofty, which are all managed by Parks Victoria but contained within Manningham LGA and share all the features and risk as the other Warrandyte State Park areas within Manningham LGA in Warrandyte and South Warrandyte.

This is not only a community of interest, but a key line of communication in emergency management and flow of information in times of crises.

For these reasons, I strongly implore the committee to retain Wonga Park within the federal electorate of Menzies.

³ Figure 4

Aaron Farr

Principal Lawyer

Rush & Hampshire Barristers & Solicitors



Appendix:

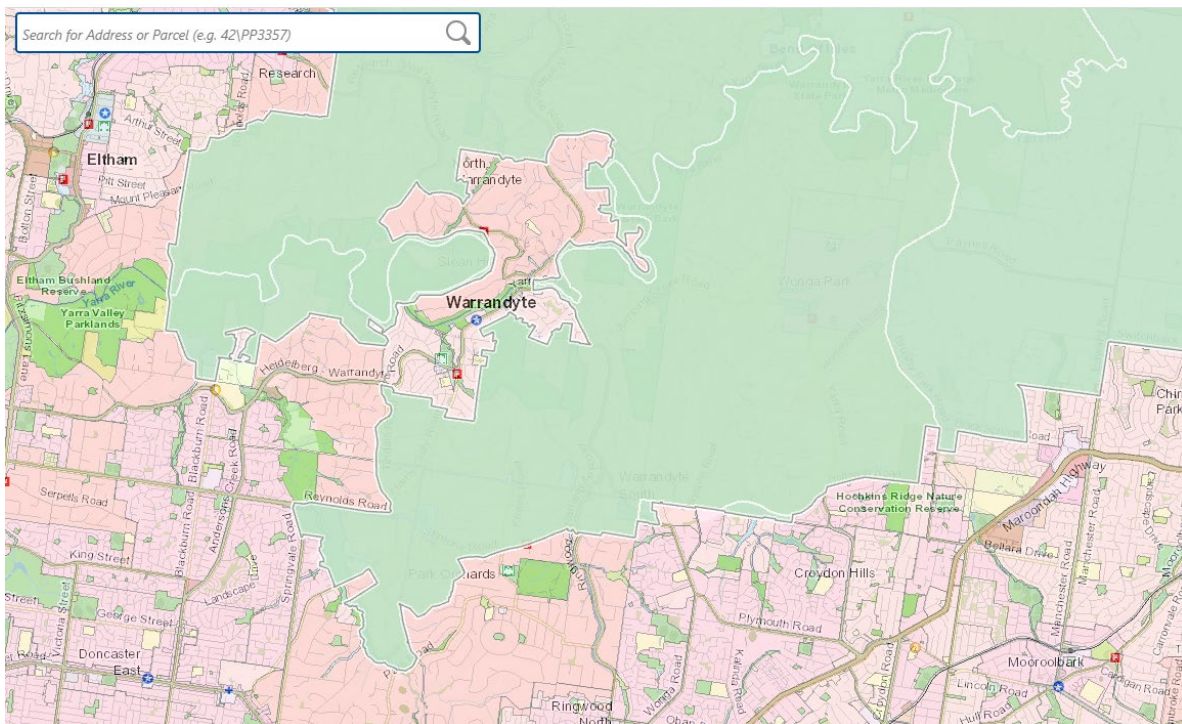


Figure 1: Urban Growth Boundary – Note significant parts of the Electorate of Menzies are outside the boundary, while all of Deakin is within it. ⁴

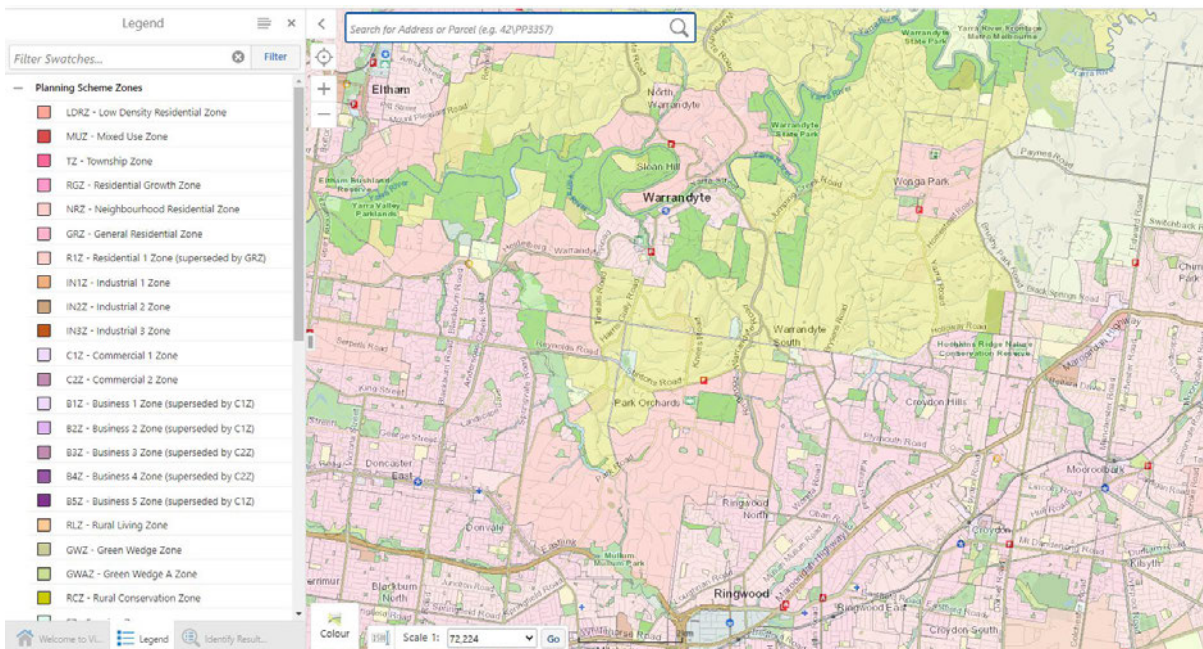


Figure 2: Zoning in Deakin and Menzies – Note Wonga Park, Warrandyte South, and North Warrandyte are zoned significantly differently to Croydon, Croydon Hills, Warranwood and other adjacent sections of Deakin. ⁵

⁴ <https://mapshare.vic.gov.au/Vicplan/index.html?RunWorkflow=LgaSelect&lga=Manningham>

⁵ <https://mapshare.vic.gov.au/Vicplan/index.html?RunWorkflow=LgaSelect&lga=Manningham>

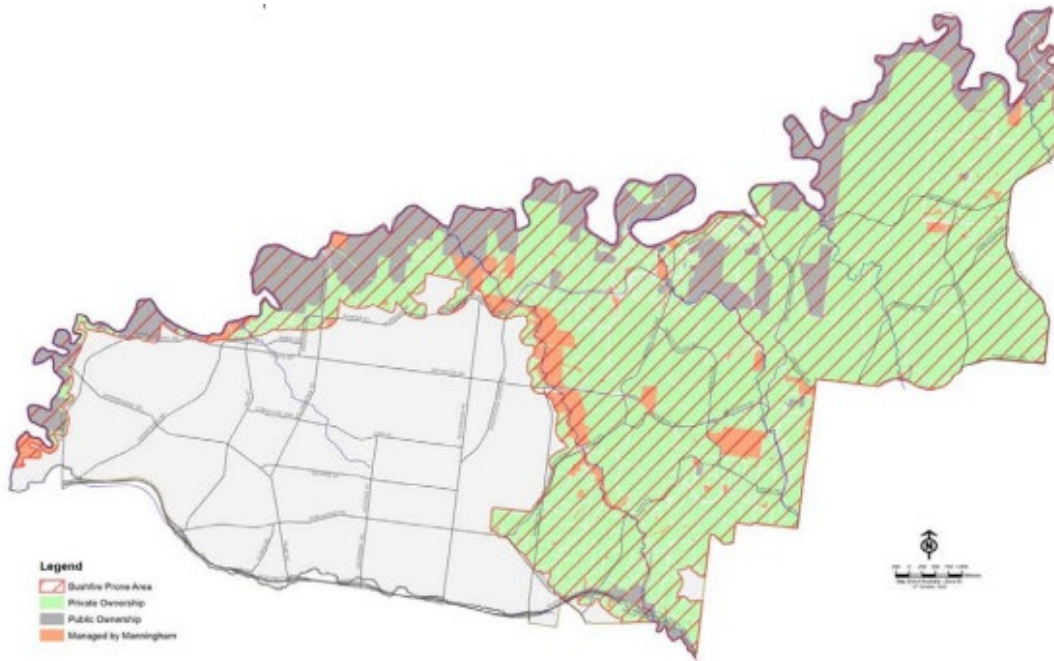


Figure 3: Bushfire risk zones in Manningham City Council⁶

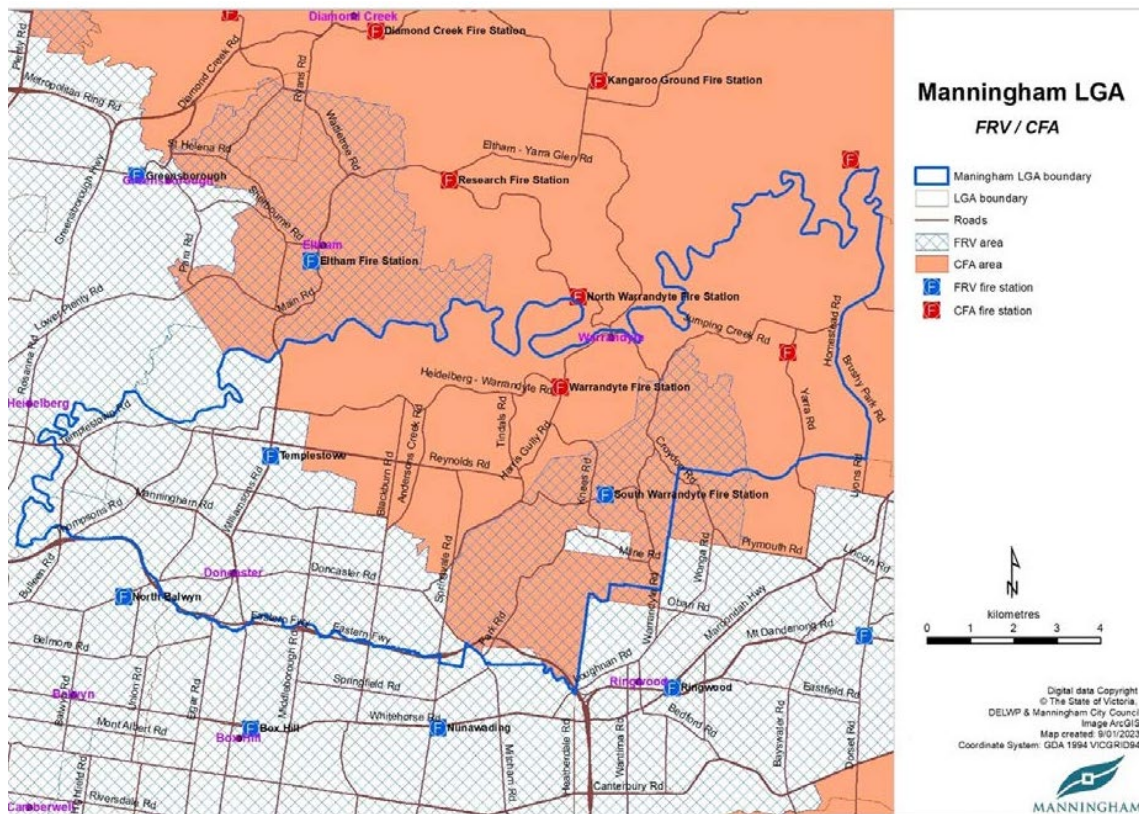


Figure 4: FRV and CFA zones⁷

⁶ <https://www.manningham.vic.gov.au/sites/default/files/2023-11/Manningham%20Municipal%20Fire%20Management%20Plan%20PDF.PDF> [pg 18]

⁷ <https://www.manningham.vic.gov.au/sites/default/files/2023-11/Manningham%20Municipal%20Fire%20Management%20Plan%20PDF.PDF>